

MOBILE HEAVY-DUTY GANTRY CRANE

HSB



5 tonnes
maximum working load

2.7 to 5.5 m high
2 to 7 m long

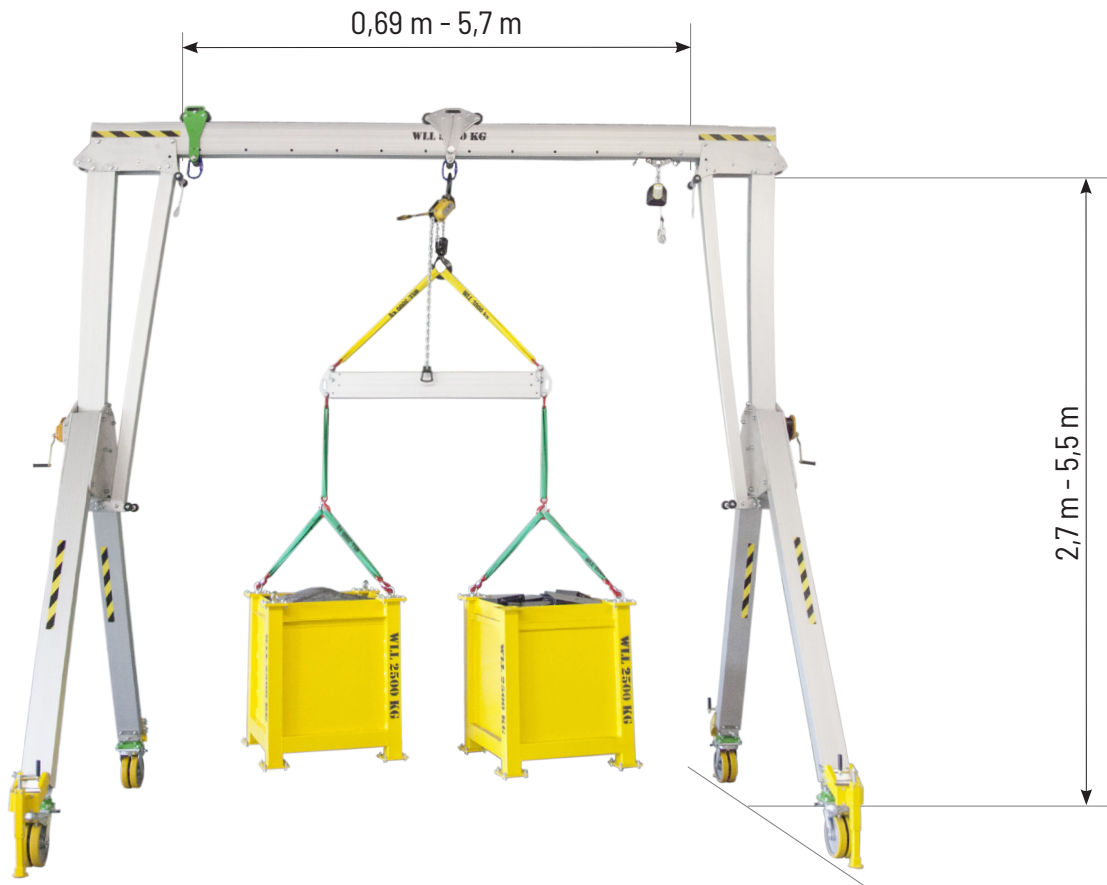
- *It is possible to move a loaded crane, provided the wheels are locked in position perpendicular to the beam*

PROTEKT[®]

 **Made
in Poland**

www.protekt.pl

MOBILE HEAVY GANTRY CRANE HSB



Basic features of HSB cranes

Modular design allows individualisation of the device and adaptation to working conditions

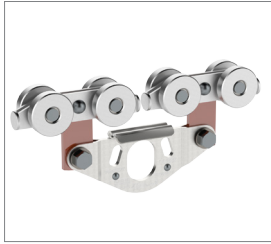
types of trolleys
(personal, and 2 material carts 2 T and 5 T) **3**

possible variants
beam length **6**

available
support heights **3**

wheel types with brake
and rotation lock 4x90 degrees **2**

- very high stability and rigidity
- it is possible to move the crane under a maximum load of 5000kg (for W7 wheels) and 2000kg (for W8 wheels) provided that the wheels are locked in the direction perpendicular to the beam



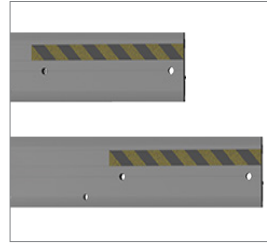
ASB500-250
INTERNAL
PERSONAL
TROLLEY



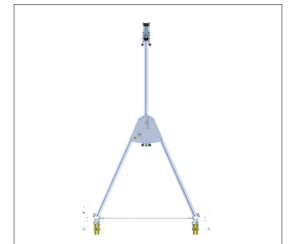
HSB000-T01-000
EXTERNAL MATERIAL
TROLLEY 2 T



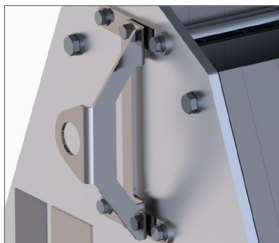
HSB000-T02-000
EXTERNAL
MATERIAL TROLLEY
5 T



HSB000-BEAM-xxx
WORKING BEAM
2 - 5 T



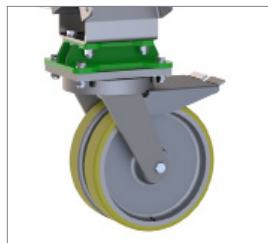
HSB000-FUx-000
FRAME FUx



HSB000-A04-003
HOIST
HOLDER



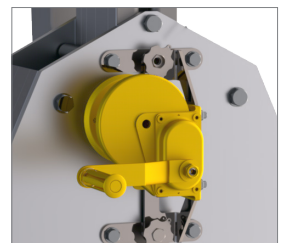
HSB000-A12-000
WHEEL
SUPPORT



W7 and W8
WHEEL



HSB000-A18-000
STEP

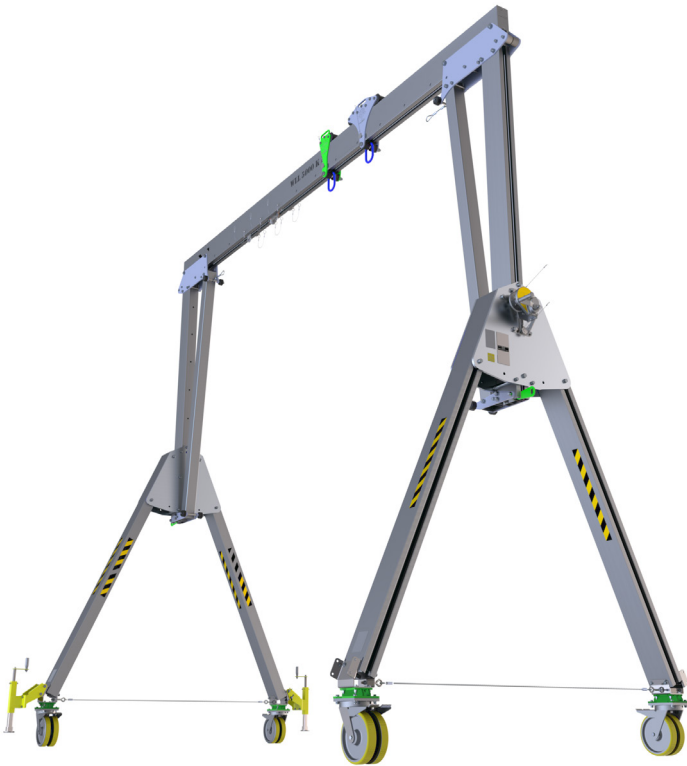


HSB000-A04-000
VERTICAL LIFTING
MODULE

Kits: off-road and rigid floor applications

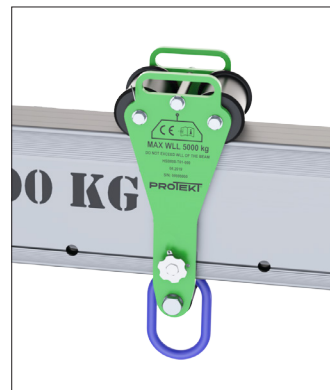
Set up to 5000 kg

Set up to 2000 kg



T2 - material trolley 5 T

W7 - double wheels
(Ø 250 mm) with
polyurethane gel
for rigid floor application









T1 - trolley 2 T

W8 - double
(Ø 440 mm) pneumatic tyres
for off-road application

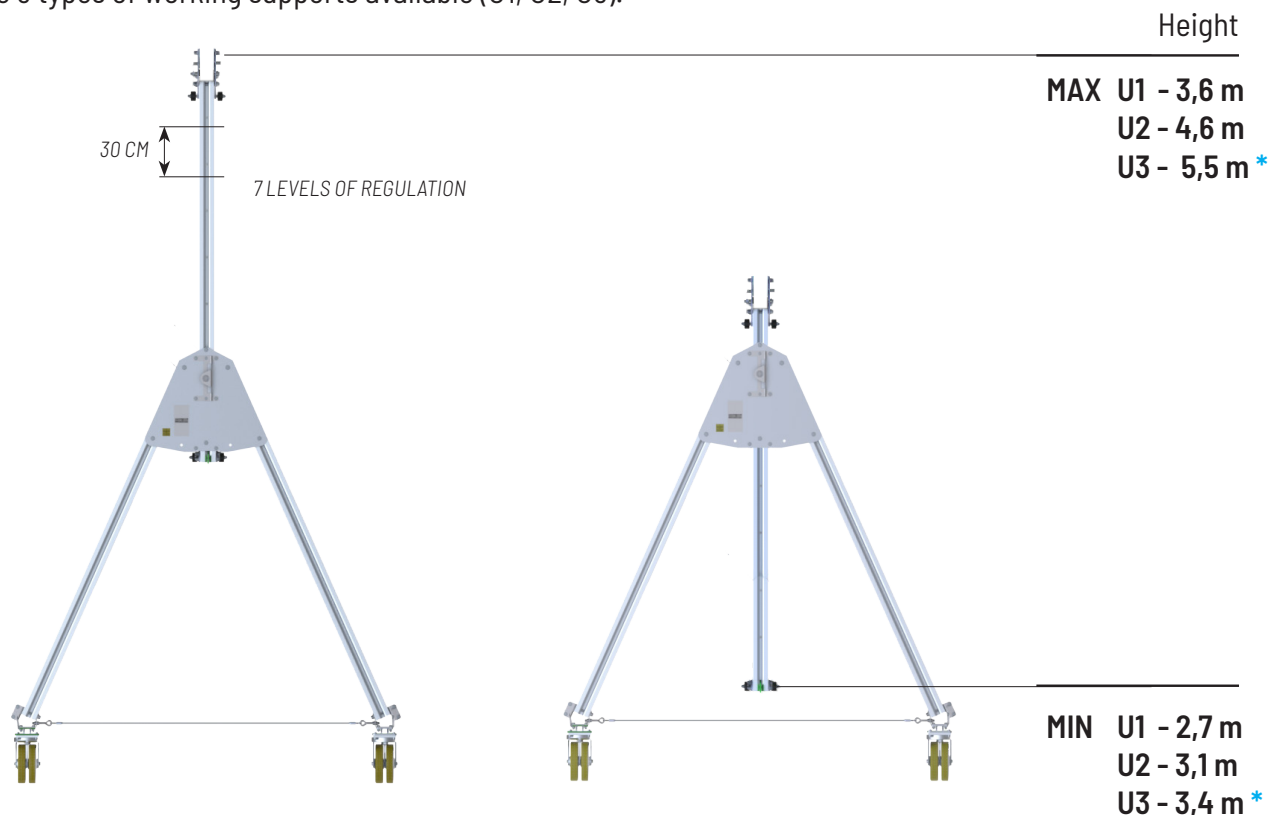
Parameters of available beams:

Work beams are available in 6 lengths.

| | | Weight | Length | WLL |
|--------------|--|--------|--------|-----|
| HSB-BEAM-200 |  | 32 kg | 2 m | 5 T |
| HSB-BEAM-300 |  | 48 kg | 3 m | 5 T |
| HSB-BEAM-400 |  | 64 kg | 4 m | 5 T |
| HSB-BEAM-500 |  | 80 kg | 5 m | 5 T |
| HSB-BEAM-600 |  | 96 kg | 6 m | 4 T |
| HSB-BEAM-700 |  | 112 kg | 7 m | 3 T |

Parameters of available supports:

There are 3 types of working supports available (U1, U2, U3).



U1 - height range from **2.7 m to 3.6 m**
U2 - height range from **3.1 m to 4.6 m**
U3 * - height range from **3.4 m to 5.5 m**

* for U3 support the maximum WLL load is 3 tonnes

HSB CRANE ASSEMBLY

1



2



3



4



5



6



MOBILE HEAVY GANTRY CRANE HSB



PROTEKT

OFFICE – Skromna 6, 93-405 Lodz, POLAND / CORRESPONDENCE ADDRESS – PROTEKT, Starorudzka 9, 93-403 Lodz, POLAND
SALES DEPARTMENT Phone +48 42 29-29-500, export@protekt.com.pl, fax +48 42 680-20-93
WAREHOUSE – Gombrowicza 6, 93-405 Lodz, POLAND

MOBILE HEAVY GANTRY CRANE **HSB**

Price list for the basic set



2x

Frame



4x

Wheel



2x

Holder for
winch



1x

Trolley
(WLL 2 tonnes)



1x

Hitch for
raising the
frame



1x

Working beam

HSB kit prices [€]

| | | Support type | | |
|-------------|---------|--------------|---------|---------|
| | | U1 - W7 | U2 - W7 | U3 - W7 |
| Beam length | HSB 200 | 11 584 | 12 074 | 12 694 |
| | HSB 300 | 12 046 | 12 536 | 13 156 |
| | HSB 400 | 12 508 | 12 998 | 13 618 |
| | HSB 500 | 12 970 | 13 460 | 14 080 |
| | HSB 600 | 13 432 | 13 922 | 14 542 |
| | HSB 700 | 13 894 | 14 384 | 15 004 |



MOBILE HEAVY GANTRY CRANE **HSB**

Price list for the off-road kit



2x

Frame



4x

All-terrain
wheel



2x

Holder for
winch



1x

Trolley
(WLL 2 tonnes)



1x

Hitch for
raising the
frame



1x

Working beam

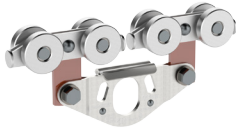
HSB kit prices [€]

| | | Support type | | |
|-------------|---------|--------------|---------|---------|
| | | U1 - W8 | U2 - W8 | U3 - W8 |
| Beam length | HSB 200 | 14536 | 15026 | 15646 |
| | HSB 300 | 14998 | 15488 | 16108 |
| | HSB 400 | 15460 | 15950 | 16570 |
| | HSB 500 | 15922 | 16412 | 17032 |
| | HSB 600 | 16384 | 16874 | 17494 |
| | HSB 700 | 16846 | 17336 | 17956 |



MOBILE HEAVY GANTRY CRANE **HSB**

Price list for accessories



Internal personal trolley

ASB500-250

177 €



External material trolley up to 2 tonnes

ASB500-130

699 €



External material trolley up to 5 tonnes

HSB000-T02-000

833 €



Wheel bracket (1 pc)

HSB000-A12-001

280 €



Vertical lifting module

HSB000-A04-000

260 €



Beam trolley

ASB500-600

194 €



Rope roller

ASB500-240

90 €



Hitch for raising the frame

ASB500-360

30 €



Bolt with pin

ASB500-130

13 €

MOBILE HEAVY GANTRY CRANE **HSB**

Transport accessories

| CATALOGUE NUMBER | LENGTH BELTS | NET PRICE |
|------------------|--|-----------|
| HSB000-A09-010 | Support transport trolley HSB 3.1m x 1.4m | 1635 € |
| HSB000-A09-060 | Support transport trolley HSB 3.5m x 1.4m | 1796 € |
| HSB000-A09-070 | Support transport trolley HSB 4.0m x 1.4m | 1958 € |

2x

Two supports
on one trolley



HSB000-A09-010



HSB000-A09-060



HSB000-A09-070

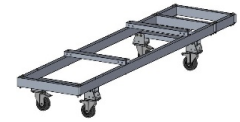
| CATALOGUE NUMBER | LENGTH BELTS | NET PRICE |
|------------------|--|-----------|
| HSB000-A09-110 | Narrow support trolley T1 / B1 / F1 3.1m x 0.8m | 1284 € |
| HSB000-A09-160 | Narrow support trolley T2 / C1 / G1 3.5m x 0.8m | 1420 € |
| HSB000-A09-170 | Narrow support trolley T3 / C2 / G2 4.0m x 0.8m | 1557 € |
| HSB000-A09-180 | Second level of the narrow support trolley HSB Tx | 229 € |

1x

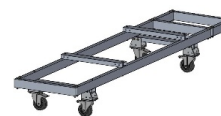
One support
on one trolley



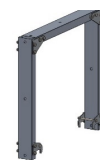
HSB000-A09-110



HSB000-A09-160



HSB000-A09-170



HSB000-A09-180





PROTEKT

OFFICE

Skromna 6
93-405 Lodz
Poland

tel. +48 42 29 29 500
export@protekt.com.pl
tel. +48 42 680-20-83
fax +48 42 680-20-93

GPS coordinates:

51.7128036
19.4332620

WAREHOUSE

Gombrowicza 6
93-405 Lodz
Poland

Address for correspondence:

Protekt
Starorudzka 9
93-403 Lodz
Poland